

## WARRANTY

The manufacturer guarantees correct device functioning. It also undertakes to repair or replace faulty device if damage is a result of material or structural faults. The warranty period is 24 months from the date of purchase, fulfilling the following conditions:

- Installation has been performed as per manufacturer recommendations.
- Seals remain intact and no authorised structural changes have been made.
- The device has been used in accordance with its intended use as per user manual.
- Damage is not a result of improperly made electrical system or atmospheric phenomena.
- The manufacturer is not liable for damage which occurred as a result of improper use or mechanical damage.

In case of failure, the device must be submitted for repair with a Warranty Card. Defects revealed within the warranty period will be removed free of charge no longer than 14 days after accepting the product for repair. Warranty and post-warranty repairs are performed by the manufacturer i.e. FAKRO PP. Sp. z o.o.

### FAKRO Sp. z o.o.

Ul. Węgierska 144A, 33-300 Nowy Sącz  
Polska  
www.fakro.com  
tel. +48 18 444 0 444, fax. +48 18 444 0 333

Quality certificate:

Device \_\_\_\_\_

Model \_\_\_\_\_

Serial number \_\_\_\_\_

Seller \_\_\_\_\_

Address \_\_\_\_\_

Purchase date \_\_\_\_\_

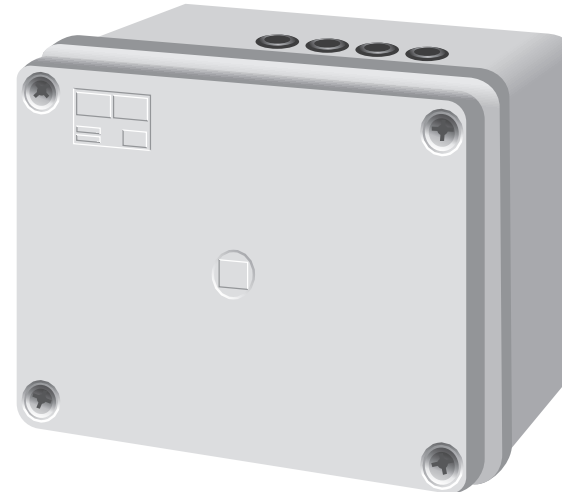
Signature (stamp) of person installing a device

**FAKRO®**  
ORIGINAL USER MANUAL

GB



# WEATHER MODULE Z-WAVE ZWMP



SAFETY RULES	3
MODULE INSTALLATION	3
SECONDARY MODULE	4
ADD TO GROUP	4
REMOVE FROM GROUP	5
RESET MODULE	5
ADDITIONAL FUNCTIONS	6
ADDITIONAL INFORMATION	7
PROBLEMS	7
MODULE INSTALLATION	7
WARRANTY	8

NC 815-GB IU/ZWMP/13.04.2017/F



FAKRO Sp. z o.o.  
ul. Węgierska 144A, 33-300 Nowy Sącz, PL  
tel. +48 18 4440444, fax +48 18 4440333  
www.fakro.com

Dear Sir/Madam! Thank you for purchasing FAKRO product. We do hope that it will meet your expectations. To ensure appropriate functioning of the product, please peruse this User Manual.

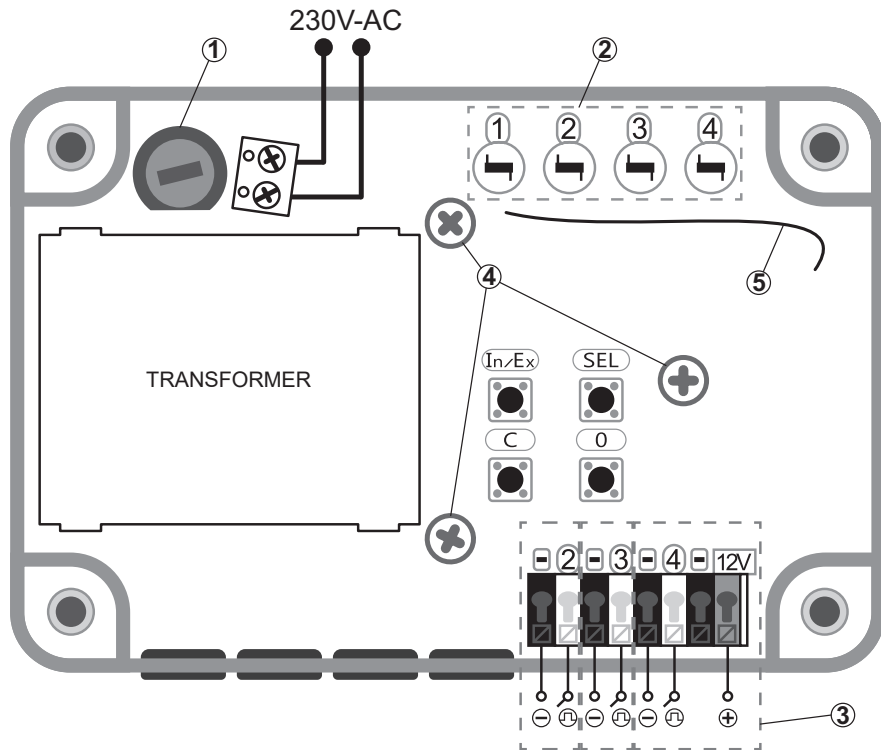
### MODULE DESCRIPTION

The ZWMP weather module is designed to control devices compatible with the Z-Wave standard. The module can support up to 231 devices, which can be assigned to max. 3 groups. The module comes with 3 digital inputs, which can receive signals from a variety of devices such as rain sensor, wind sensor, thermostat, timer switch or the EIB system, etc. The ZWMP module can act as PRIMARY and SECONDARY controller.

**PRIMARY controller** – used to operate devices. It can change network settings as well as add and remove devices. Only one PRIMARY controller can be in one network.

**SECONDARY controller** – used only to operate devices. Many SECONDARY controllers can be in one network.

ZWMP MODULE STRUCTURE		TECHNICAL SPECIFICATION	
①	- Fuse	<b>Power supply:</b> 230V AC	<b>Radio protocol:</b> Z-Wave
②	- Signalling LEDs		
③	- Sensor input	<b>Operating range:</b> Up to 20m in the building	<b>Frequency:</b> EU – 862.42 MHz; AS/NZ – 921.42 MHz; US/Canada – 908.4 MHz; RU – 869 MHz. (depending on version)
④	- Screws fixing electronic board		
⑤	- Antenna	<b>Working temperature:</b> 5 – 40°C	<b>Dimensions:</b> 127/87/57mm
<b>IN/EX</b>	- Programming button		
<b>SEL</b>	- Group change button		
<b>C</b>	- Button CLOSE		
<b>O</b>	- Button OPEN		



### ADDITIONAL INFORMATION

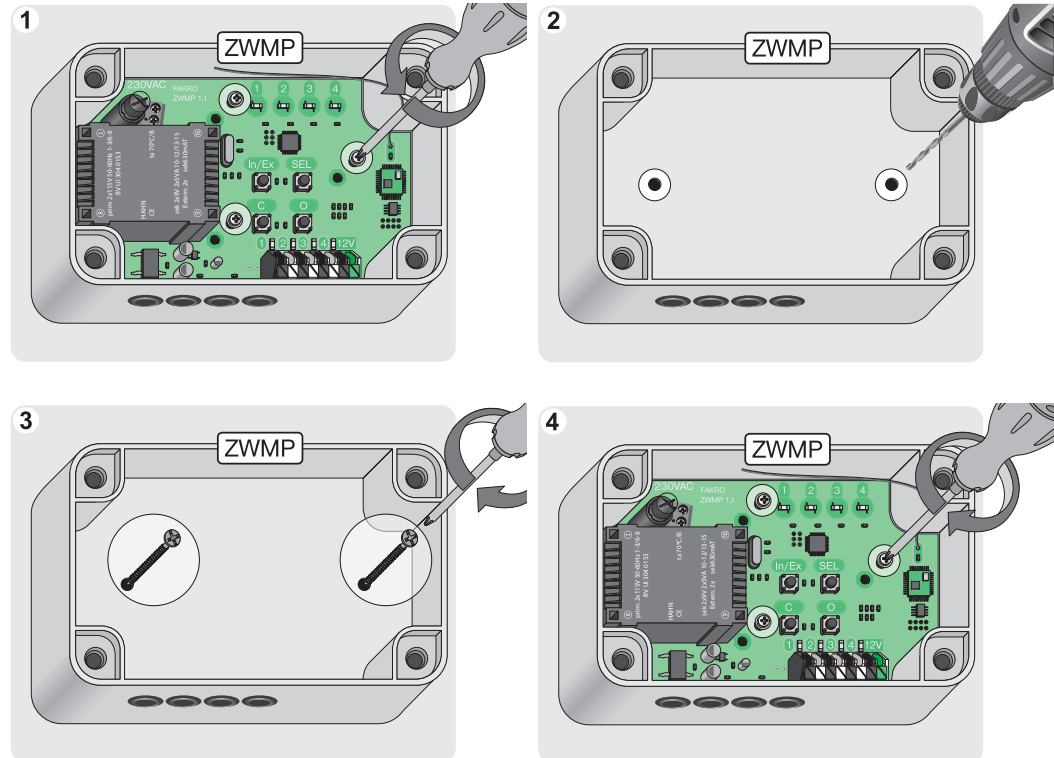
Each device physically removed from the network (e.g. damaged) must be removed from the controller's memory. This action allows to reduce reaction time and extend the working time of mobile controllers. If it is not possible to remove damaged device from the controller's memory, it is advisable to reset the entire network and re-create it.

After adding new devices to the network which can be controlled by SECONDARY module, repeat the procedure: SECONDARY MODULE (page 4) and ADD TO GROUP (page 4).

### PROBLEMS

1. ZWMP module cannot be added as SECONDARY.	Restore added module to factory settings. Make sure that the procedure is performed within specified time limit. SECONDARY MODULE function in the ZWMP module works for 60 sec. Problems with reach possible.
2. Device cannot be added to selected group.	Up to 231 devices can be assigned to all groups. The device is not in the network or is beyond the reach of the Z-Wave network.
3. Device cannot be removed from group or network.	Make sure that programming button is pressed on the appropriate device for no longer than 10 sec. from the start of the procedure. Problems with reach possible.
4. Device cannot be added.	- The device may be assigned to another network. Carry out the procedure: REMOVE DEVICE FROM NETWORK. - Make sure that programming button is pressed for no longer than 10 sec. from the start of the procedure. - Up to 231 devices can be assigned to the module. - Problems with reach possible.
5. Problem with reach.	Check whether the device you want to control is correctly connected to the source of power. Check whether the device can be run using manual control button.

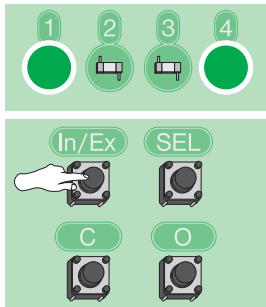
### MODULE INSTALLATION



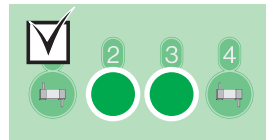
## ADDITIONAL FUNCTIONS

### ADD DEVICE TO NETWORK

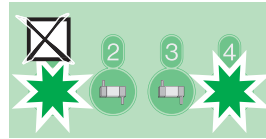
This function allows to add devices to the network without adding them to the group. Once this procedure is completed, go to ADD TO GROUP section (page 4). Using ADD DEVICE TO NETWORK function you can also add another SECONDARY controllers.



Press IN/EX button. Then, within 10 sec. press programming button\*2.

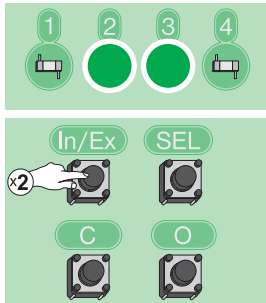


Programming result. In case of error, repeat the procedure or see page 7, section 4.



### REMOVE DEVICE FROM NETWORK

Controller is not assigned to any network – device from any network can be removed.  
PRIMARY controller – device from the network of this controller can be removed.  
SECONDARY controller – device cannot be removed.



Press twice IN/EX button. Then, within 10 sec. press programming button\*2.



Programming result. In case of error, repeat the procedure or see page 7, section 3.



\*2 Programming mode is reached by pressing programming button on the device being added / reset. FAKRO products have programming buttons marked with "P" letter.

## SAFETY RULES

When installing the ZWMP module it is required to observe the following recommendations:

- Installation should be carried out in accordance with manufacturer's instructions.
- Connecting the module should always be performed with the supply voltage disconnected.
- After unpacking, check the module elements for any signs of mechanical damage.
- Before connecting the module, make sure that the power supply corresponds with module voltage specified on the data plate.
- Plastic containers used for packing should be stored out of children reach as they may be a potential source of danger.
- The ZWMP module should be used according to its intended design. FAKRO shall not be responsible for any consequences being the result of improper module use.
- Any activities related to cleaning, adjustment or dismantling the module should be preceded with disconnecting it from the power supply.
- The module must not be washed using solvent-based substances or open stream of water (do not immerse in water).
- Any repairs of the module should be carried out by service authorised by the manufacturer.
- Safe length of wires connected to the connector is 5m. It is allowed to use longer wires, but one must make sure that interference does not adversely affect work of the ZWMP module
- The ZWMP weather module is designed for installation inside the room.



The module is powered by hazardous voltage 230V AC!

## MODULE INSTALLATION

The module comes with 3 digital inputs marked with numbers 2, 3 and 4. Connect devices to inputs following the diagram:

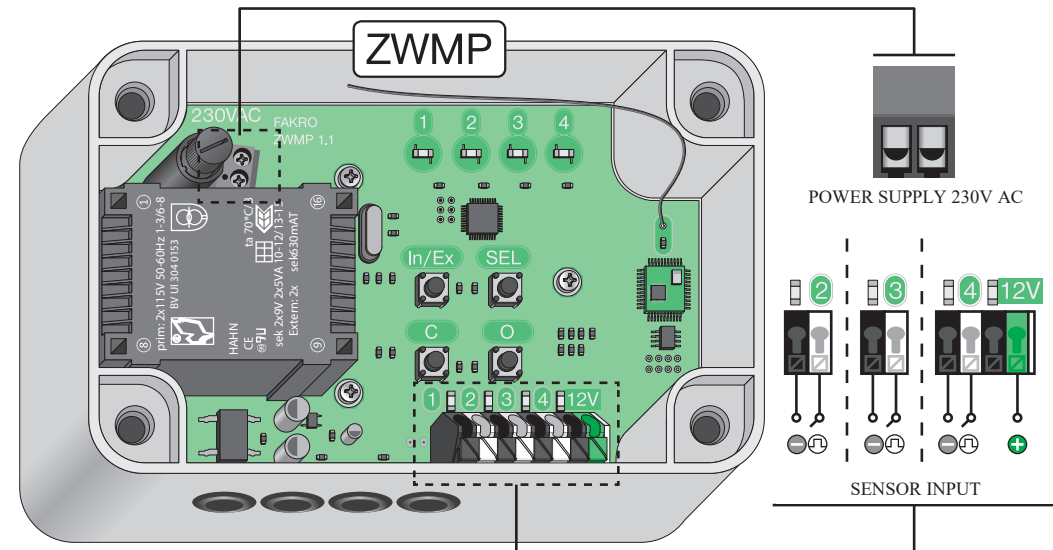
Input 2 – dedicated to the ZFD smoke sensor or other sensor, e.g. thermostat.

Input 3 – dedicated to the ZWD wind sensor.

Input 4 – dedicated to the ZRD rain sensor, equipped with 12V DC power supply to heat up the ZRD sensor so that the sensor does not react to external interference such as fog or dew.

Information on how to connect sensors is to be found in the fitting instructions included with the product.

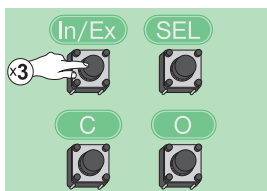
The ZWMP module is powered by 230V AC.



MODULE INSTALLATION – Page 7.

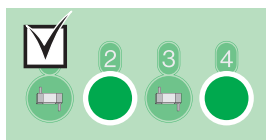
## SECONDARY MODULE

The procedure allows to add the ZWMP module as SECONDARY to the existing network. PRIMARY controller in this network can be of any type. In order to operate devices by means of SECONDARY module, devices must be added to the selected group (page 4).



Press three times IN/EX button within 1.5 sec.

Within 10 sec. run ADD DEVICE TO NETWORK function on PRIMARY controller.  
ZWMP module – page 6. Controller of other type – see its User Manual.



Programming result. In case of error, repeat the procedure or see page 7, section 1.

## ADD TO GROUP

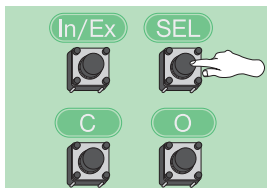
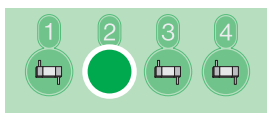
The procedure allows to add controlled devices to any group:

Group 2 – controlled by the ZFD smoke sensor or other sensor, e.g. thermostat.

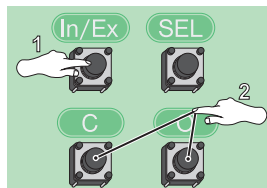
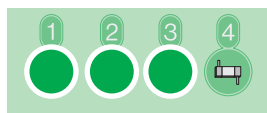
Group 3 – controlled by the ZWD wind sensor.

Group 4 – controlled by the ZRD rain sensor.

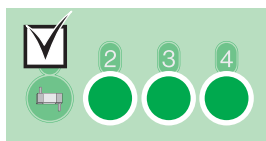
Only those device can be added to the group which have already been added to the Z-Wave network.



Using SEL button select the group (2, 3 or 4) to which the device is to be assigned.



Within 1.5 sec. press IN/EX button and then press “C” button (close) or “O” button (open) depending on the action of the device\*1. Then, within 10 sec. press programming button\*2.



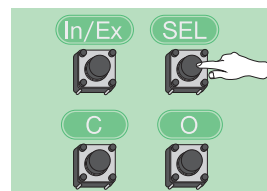
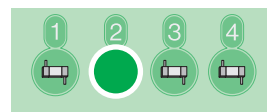
Programming result. In case of error, repeat the procedure or see page 7, section 2.

**\*1 Note** – It is not possible to set two opposite actions using the same digital input (in the same group). If, for example, the window closes in the rain, there is no possibility that it will automatically open once the rain is over.

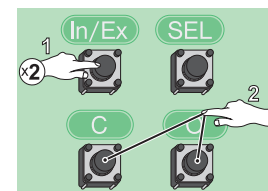
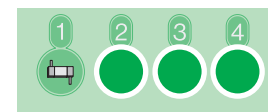
**\*2 Programming mode** is reached by pressing programming button on the device being added / reset. FAKRO products have programming buttons marked with “P” letter.

## REMOVE FROM GROUP

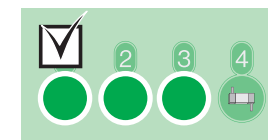
This function allows to remove devices from the group without removing them from the Z-Wave network. The device can be added again to the group of any controller, which is in the same network.



Using SEL button select the group (2, 3 or 4) from which the device is to be removed.



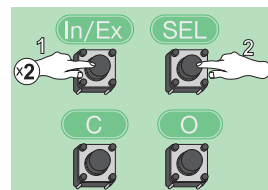
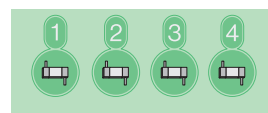
Within 1.5 sec. press IN/EX button and then press “C” button (close) or “O” button (open) depending on how the device has been programmed. Then, within 10 sec. press programming button.



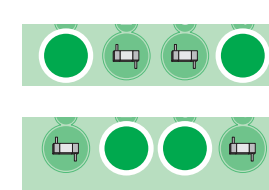
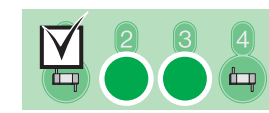
Programming result. In case of error, repeat the procedure or see page 7, section 3.

## RESET MODULE

PRIMARY MODULE RESET – all information in the module is removed. Devices can be controlled again only after carrying out the procedure: REMOVE DEVICE FROM NETWORK (page 6), ADD DEVICE TO NETWORK (page 6) and ADD TO GROUP (page 4).  
SECONDARY MODULE RESET – all information in the module is removed. Devices can be controlled again only after carrying out the procedure: SECONDARY MODULE (page 4) and ADD TO GROUP (page 4).



Press three times IN/EX button within 1.5 sec., and then press SEL button.



After a short while, the module will signal success of the procedure by LED's being alternately on.